



**ecolution**  
AIR CONDITIONING

# Large Ducted Systems

FDU

Mitsubishi Heavy Industries has further extended its development in world leading technology applied to high efficiency air conditioning and heat pump systems

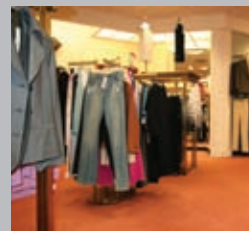
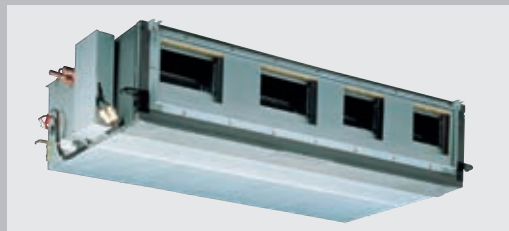
## FDU Large Ducted Systems

Cooling Range: 22.4 - 28kW

Heating Range: 25 - 31.5kW



Air conditioners and heat pumps for commercial applications



OFFICES • RETAIL STORES • STUDIOS • CONFERENCE ROOMS • BARS • RESTAURANTS • GYMS

The ADVANCED FDU Horizontal Large Ducted System is a high specification product, with energy saving INVERTER technology, extended pipe runs and sophisticated operation and service control functions. FDU units are concealed within the ceiling space above the room to be air conditioned, utilising a ductwork system to distribute the air to a series of grilles for maximum comfort.

- 7-day/24-hr Programmable Timer - included in standard wired controller
- Mitsubishi INVERTER Scroll Compressors resulting in significant savings in running costs
- 70m pipe runs
- High performance fans for high static applications
- Compact Outdoor Units with side-blow twin fans, have now been introduced, with lower sound levels and smaller physical size, ideal for installation in restricted locations





## Key Features

- 7-Day Programmable Timer
- Two on/off settings each day
- Different temperatures for each set period
- External timer/BMS switching for Group (up to 16 units)
- Wall Controller - hard wired
- Integral temperature sensor
- 3 ph INVERTER technology on all models
- Low ambient control included
- Auto re-start after power interruption
- High static pressure
- Reduced sound levels



RCE3 Wired Controller



Integral Temperature Sensor

Energy Saving up to **34%** with **INVERTER Technology**

## Superior Controls Specification

The Mitsubishi RCE3 remote controller combines all the basic user requirements - temperature setting, fan speed selection, mode and timer settings, with a comprehensive range of service data functions, inverter compressor speed indication, fault diagnosis and operational history.

**FDU Ducted** units are of robust construction and are fitted with large diameter fans for optimum air volume.

**External Static** pressures for standard air flow are listed below. Always refer to manufacturer's fan performance graphs when designing ductwork.

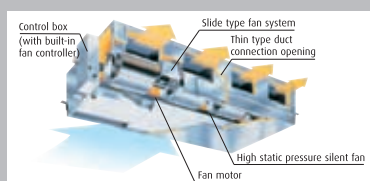
## INVERTER technology

INVERTER systems constantly adjust the cooling/heating output, dependent on the varying room requirement, providing consistent and comfortable temperature control and lower energy costs.

		LARGE DUCTED SYSTEMS	
		FDU 200VS	FDU 250VS
Power source		3 ph	3 ph
COOLING (nominal) range	kW	7.0 to 22.4	10.6 to 28.0
UK Cooling (max)	kW	21.1	26.3
Energy label in cooling		B	D
HEATING (nominal) range	kW	7.6 to 25.0	9.5 to 31.5
C.O.P.		3.54	3.41
Energy label in heating		B	B
INDOOR UNIT H x W x D	unit (mm)	360 x 1570 x 830	360 x 1570 x 830
Net weight	kg	92	92
Air Volume at 100Pa (standard)	m <sup>3</sup> /s	0.85	1.13
Maximum external static	Pa	200	200
OUTDOOR UNIT H x W x D	unit (mm)	1300 x 970 x 370	1505 x 970 x 370
Net weight	kg	122	140
Power Source Rating MCB	A	15A/ph	20A/ph
Ref. max piping length	m	70	70

Cooling Nom: 27°Cdb/19°Cwb, Amb: 35°C UK Cooling: I/d: 23°Cdb/16°Cwb, Amb: 30°C Heating: I/d: 20°Cdb, Amb: 7°Cdb/6°Cwb

## FDU Series Top Specification High Performance Systems



High static pressure up to 200pa



Compact INVERTER outdoor units - small footprint

Technical features & Accessories



MITSUBISHI HEAVY INDUSTRIES air conditioning systems are imported and distributed in the UK and Ireland by 3D Air Sales Ltd & HRP Ltd. The information listed is for guidance purposes, is subject to alteration without notice, and does not form part of a Contract.



Selected systems are listed on the Energy Technology List. This listing enables 100% tax allowance in the first year, on the total cost of Mitsubishi systems, plus the installation costs (including pipework and electrical supplies, materials, labour and design costs). Check ETL listing on government web site: [www.eca.gov.uk/etl](http://www.eca.gov.uk/etl)

