



ecolution
AIR CONDITIONING

Wall Systems
FDKVA

Mitsubishi Heavy Industries has further extended its development in world leading technology applied to high efficiency air conditioning and heat pump systems

FDKVA Wall Systems

Cooling Range: 4.7 - 6.0kW

Heating Range: 5.4 - 7.1kW



Air conditioners and heat pumps for commercial and residential applications



OFFICES • HOTELS • SHOPS • MEETING ROOMS • RESTAURANTS • GYMS • EQUIPMENT ROOMS



The ADVANCED FDKVA Wall Mounted System is a high specification product, with INVERTER technology, extended pipe runs and sophisticated operation and service control functions. It is ideal for most commercial environments, where longer pipe lengths are required between indoor and outdoor units.

- 7-day/24-hr Programmable Timer - included in standard wired controller
- Mitsubishi INVERTER Scroll Compressors are used throughout the range
- Significant savings in running costs
- Up to 40m pipe runs
- Compact Outdoor Units have now been introduced, with lower sound levels and smaller physical size, ideal for installation in restricted locations

Key Features

- 7-Day Programmable Timer
- Two on/off settings each day
- Different temperatures for each set period
- External timer/BMS switching for Group (up to 16 units)
- Wall Controller - hard wired
- Integral temperature sensor
- Infra-red wireless controller optional
- INVERTER technology on all models
- Low profile attractive grey/white unit casing
- Improved air discharge louvre
- Low ambient control included
- Auto re-start after power interruption
- Reduced sound levels
- Compatible with Multi Systems
- Pre - charged for 30m of pipework



RCE1 Wired Controller



Optional 'Wireless' Controller

Energy Saving with Inverter Technology

Superior Controls Specification

The Mitsubishi RCE1 remote controller combines all the basic user requirements - temperature setting, fan speed selection, mode and timer settings, with a comprehensive range of service data functions, inverter compressor speed indication, fault diagnosis and operational history.

Infra-red wireless controller is available as an option. (Limited control function)

Wall mounted unit - new design

The new slim profile indoor unit has a reduced height of 298mm, allowing installation above door openings and windows in many situations. The new design of multiple stage heat exchanger and fan enclosure ensures low air velocity and low sound levels.

INVERTER technology

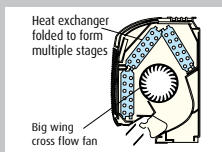
INVERTER systems constantly adjust the cooling/heating output, dependent on the varying room requirement, providing consistent and comfortable temperature control and lower energy costs.

		WALL SYSTEMS		
		FDKVA 151 HEN	FDKVA 201 HEN	FDKVA 251 HEN
Power source		1 ph	1 ph	1 ph
COOLING (nominal) range	kW	1.8 to 4.7	2.2 to 5.6	2.8 to 6.0
UK Cooling (max)	kW	4.56	5.43	5.82
Energy label in cooling		B	B	C
HEATING (nominal) range	kW	2.0 to 5.4	2.5 to 6.3	3.1 to 7.1
C.O.P.		3.46	3.42	3.41
Energy label in heating		B	B	B
INDOOR UNIT H x W x D	unit (mm)	298 x 840 x 240	298 x 840 x 240	298 x 840 x 240
Net weight	kg	12	12	12
OUTDOOR UNIT H x W x D	unit (mm)	595 x 847 x 290	595 x 847 x 290	595 x 847 x 290
Net weight	kg	40	40	40
Power Source Rating MCB	A	16A	16A	16A
Ref. max piping length	m	40	40	40

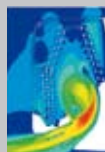
Cooling Nom: 27°Cdb/19°Cwb, Amb: 35°C UK Cooling: I/d: 23°Cdb/16°Cwb, Amb: 30°C Heating: I/d: 20°Cdb, Amb: 7°Cdb/6°Cwb

FD-A Series Top Specification High Performance Systems

Technical features & Accessories



Multiple stage compact heat exchanger



Jet Air Scroll - for optimum quiet airflow



Outdoor Unit - new compact design



Multi systems, 2, 3, 4 indoor units to one outdoor unit